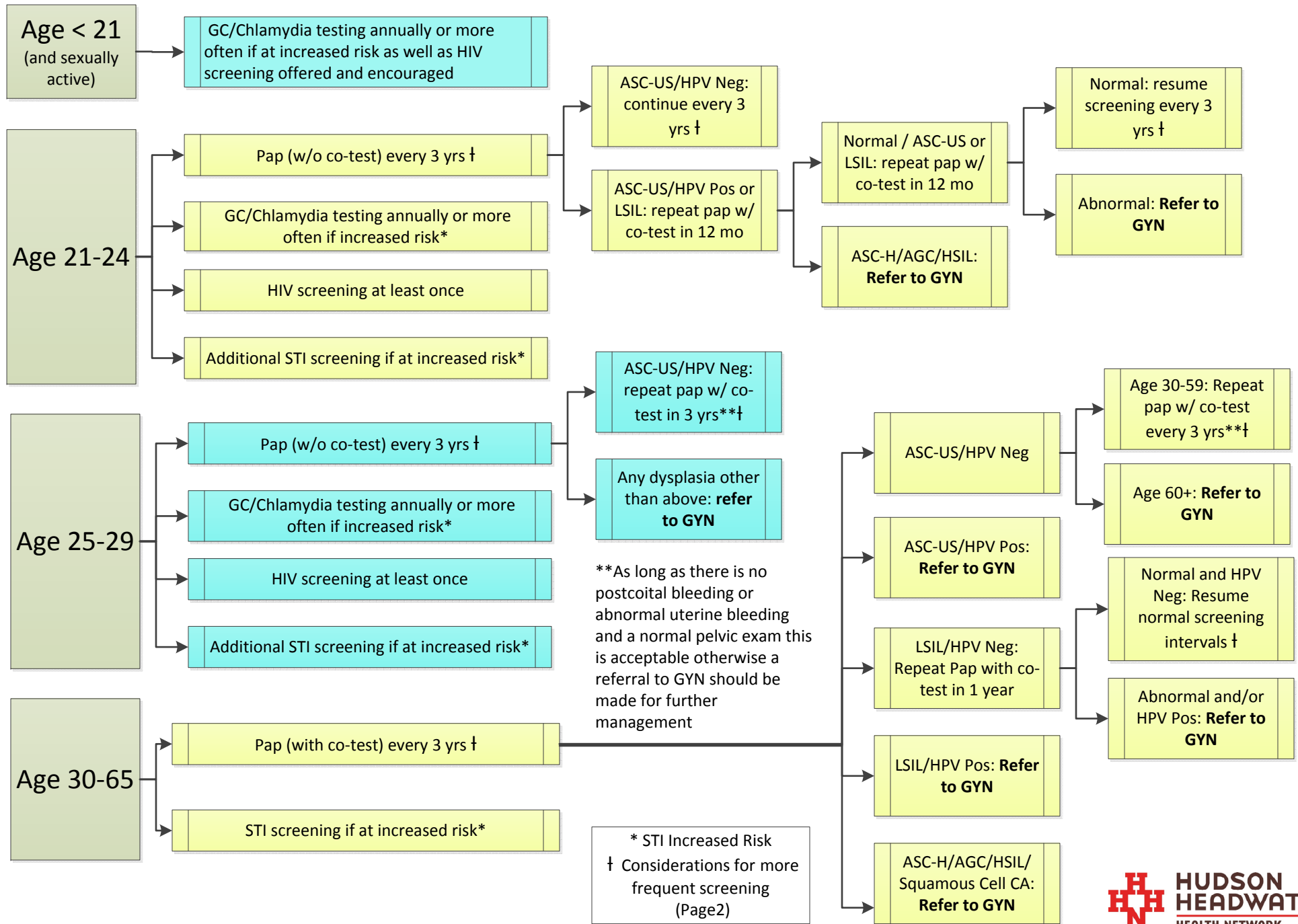
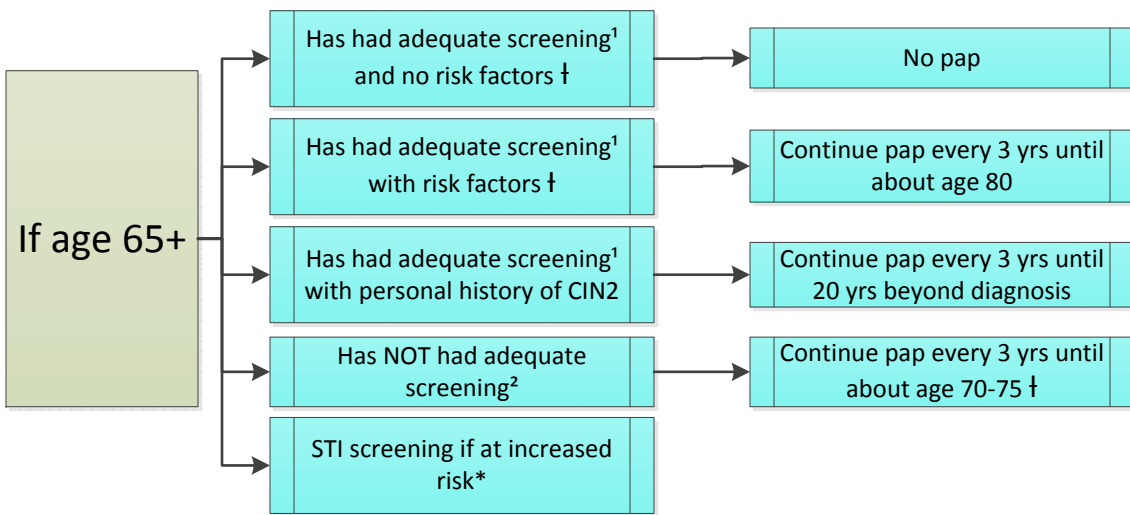


Cervical Cancer Screening Recommendations

8/2/16



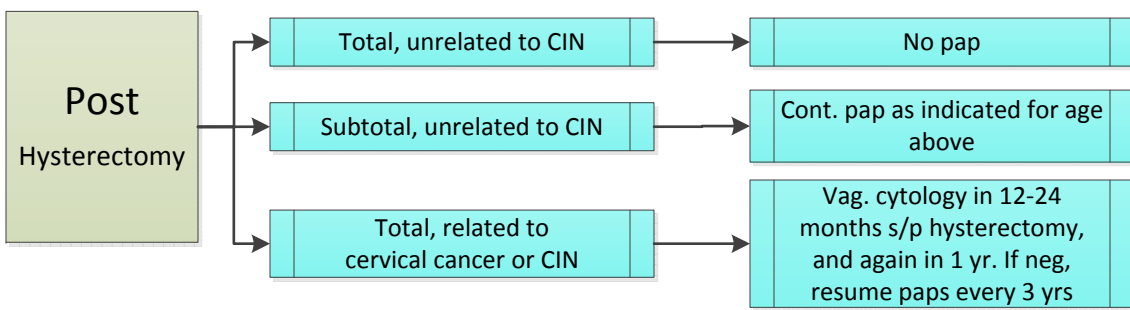
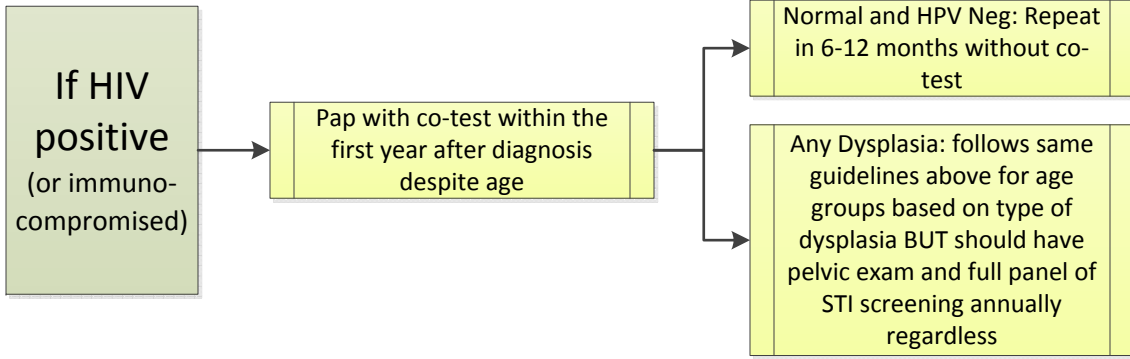


¹ Adequate Screening defined as 2 consecutive normal co-tests within the past 10 years with the most recent being no more than 5 yrs prior

² Inadequate Screening defined as having no screening performed in the past 5 yrs

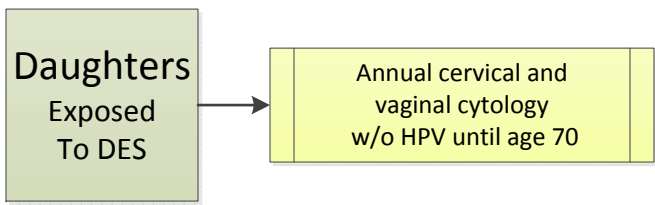
† Consider continued screening or screening more frequently in those who:

- Have a history of an abnormal pap
- Are a current smoker or have a history of smoking
- Have a history of previous HPV related disease
- Have had a new sexual partner since their last screening



***STI Increased Risk:**

- Multiple sex partners; particularly within the past 12 months
- Sex partner with multiple concurrent sex partners or suspicion of such
- Inconsistent condom use outside of a monogamous relationship
- Recurrent STI diagnosis; particularly within the preceding 24 months
- Women who exchange sex for drugs or money; particularly within the past 12 months



ASC-US – Atypical Squamous Cells, Undetermined Significance
 ASC-H – Atypical Squamous Cells, cannot exclude High Grade Squamous Intraepithelial Lesion
 LSIL – Low Grade Squamous Intraepithelial Lesion
 HSIL – High Grade Squamous Intraepithelial Lesion
 CIN – Cervical Intraepithelial Neoplasia
 AGC – Atypical Glandular Cells